



# INSTRUCTION BULLETIN

No. 9021117  
Machine: M17  
Published: 11-2020  
Rev. 00

**NOTE: DO NOT DISCARD the Parts List from the Instruction Bulletin. Place the Parts List in the appropriate place in the machine manual for future reference. Retaining the Parts List will make it easier to reorder individual parts and will save the cost of ordering an entire kit.**

*NOTE: Numbers in parenthesis ( ) are reference numbers for parts listed in Bill of Materials.*

Installation instructions for **kit number 9021118**

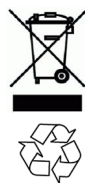
Kit installation must be performed by TennantTrue<sup>®</sup> service or an authorized service provider.

## SYNOPSIS:

This kit contains the parts needed to install static dissipation kit on M17 sweeper- scrubbers equipped with either the dual force sweep head or direct throw sweep head.  
Please follow step-by-step instructions.

## SPECIAL TOOLS / CONSIDERATIONS: NONE

(Estimated time to complete: 1.5 hours)



### PROTECT THE ENVIRONMENT

Please dispose of packaging materials, used machine components such as batteries and fluids in an environmentally safe way according to local waste disposal regulations.

Always remember to recycle.

## PREPARATION:

**FOR SAFETY: Before leaving or servicing machine, stop on level surface, turn off machine, set parking brake, and remove key.**

1. Disconnect the battery cable from the machine.



**WARNING: Always disconnect battery cables from machine before working on electrical components.**

2. Remove the left brush panel from the machine. Set the left brush panel and all mounting hardware aside. (Fig. 1).

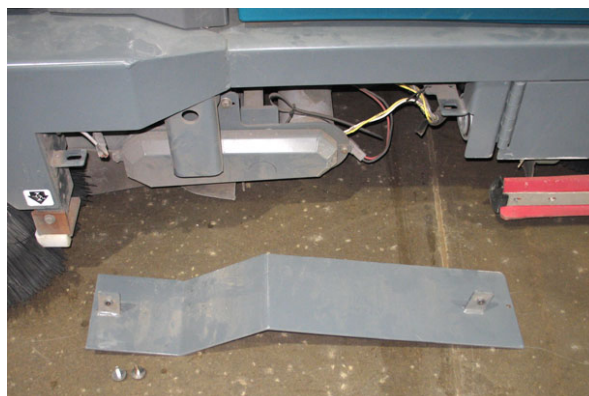
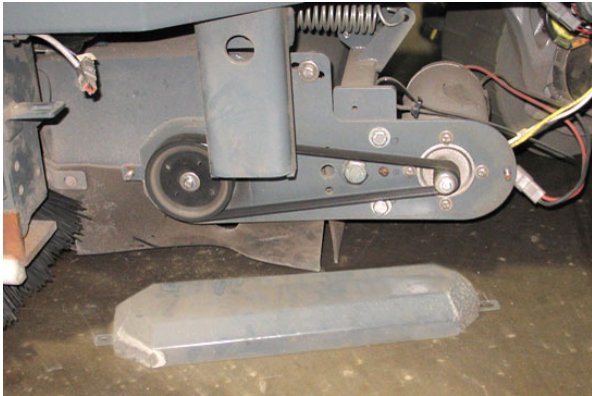


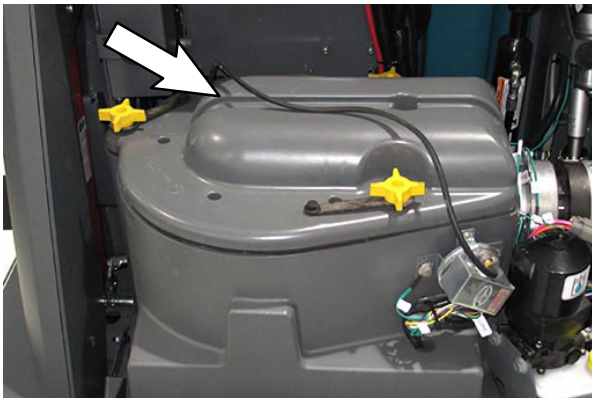
FIG. 1

3. Remove the sweep drive belt cover from the sweep drive arm assembly. Set the sweep drive belt cover and all mounting hardware aside. (Fig. 2)

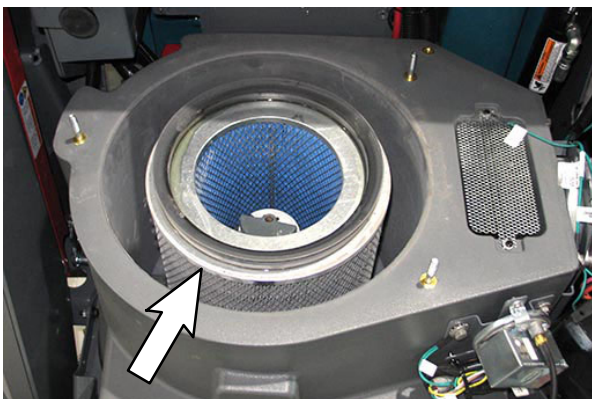


**FIG. 2**

4. Remove the hopper cover from the hopper. Set the hopper cover aside.
5. Remove the dust filter cover and the dust filter from the hopper. Set the dust filter cover and dust filter aside. (Fig. 3/Fig. 4)



**FIG. 3**



**FIG. 4**

## INSTALLATION:

1. Disconnect the main wire harness from the filter shaker assembly. (Fig. 5)

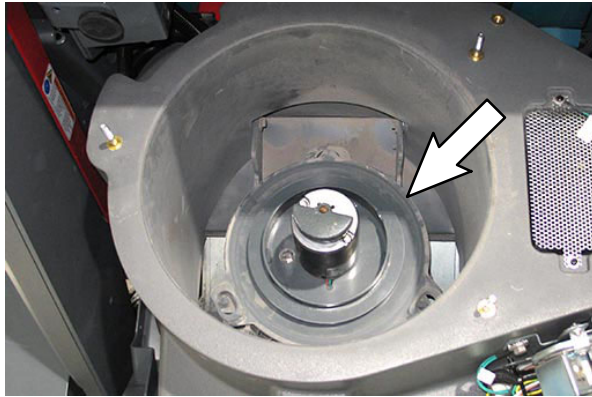


FIG. 5

2. Remove the filter shaker assembly from the hopper. (Fig. 5)
3. Drill a 0.375 in. (9.52 mm) into the filter weldment (for installing black wire (5)). (Fig. 6)

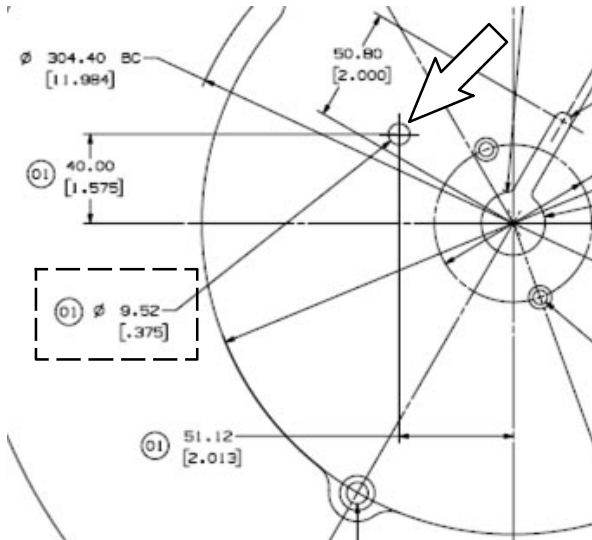


FIG. 6

4. Drill another 0.375 in. (9.52 mm) into the filter weldment (for installing cable tie to secure the black wire (5)). (Fig. 7)

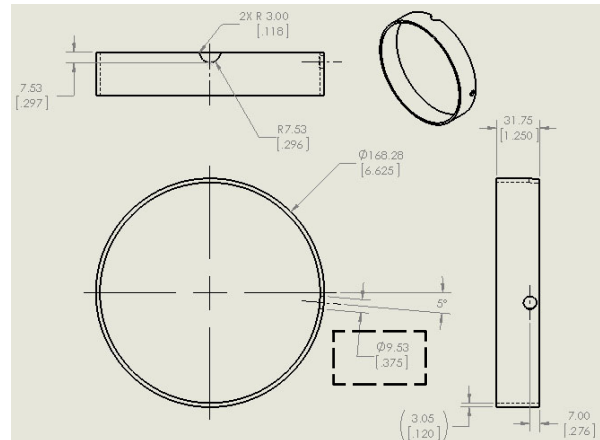


FIG. 7

5. Scratch/sand coating from the filter weldment. (Fig. 8)



FIG. 8

6. Use a hex screw (6), flat washer (4), and hex nut (7) to install the black wire (5) onto the filter weldment. (Fig. 8)
7. Place the filter shaker assembly back into hopper and connect the other end of the black wire (5) to existing hardware in the hopper. (Fig. 9)

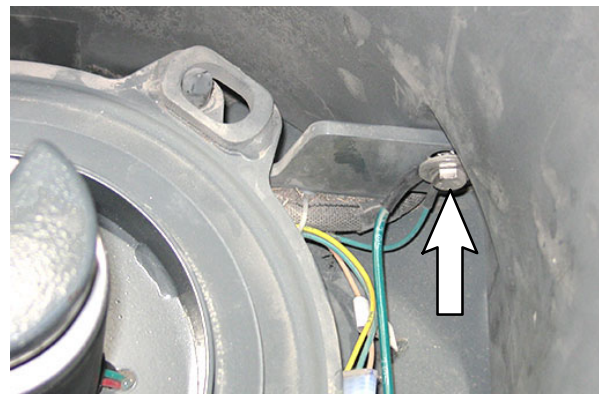


FIG. 9

8. Use a cable tie to secure the black wire (5) to the filter weldment and away from the moving parts on the filter shaker assembly. (Fig. 7/ Fig. 8/ Fig. 9)
9. Remove the hardware securing the VAN FAN #1 wire to the hopper vacuum fan. (Fig. 10)

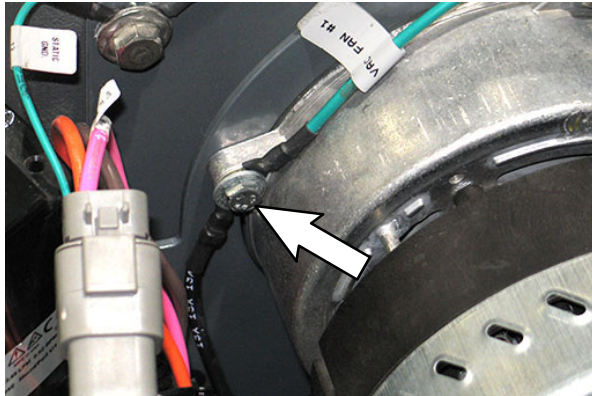


FIG. 10

10. Use the removed hardware to connect the green wire (8) and reconnect VAN FAN #1 wire to the hopper vacuum fan. (Fig. 10)
11. Route the green wire (8) down to the hardware securing the bracket into the hopper and use hardware to connect the green wire to the hopper. (Fig. 11).

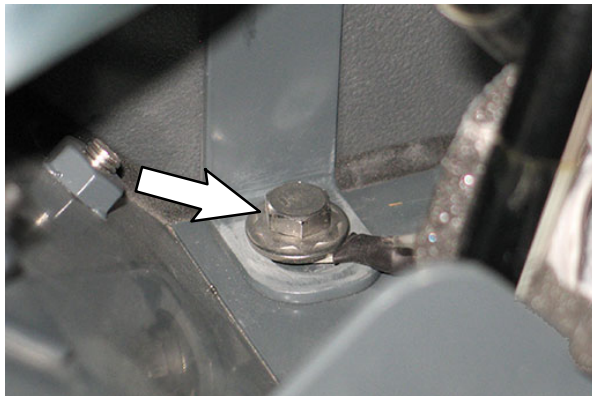


FIG. 11

12. Reinstall all parts and components removed to install the green wire (8) and the black wire (5) into the hopper.

13. Use the M8 hex screw (3), two flat washers (4), and star washer (10) to secure the ground chain (2), static strap (9), and existing ground harness to the frame of the machine on dual force sweep machines. (Fig. 12)

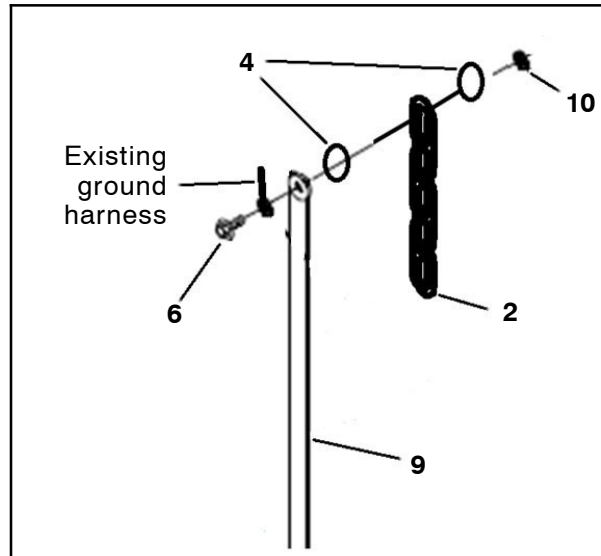


FIG. 12

14. **Machines with direct throw sweep head only:** Drill a 0.335 in. (8.5 mm) into the sweep head drive arm. (Fig. 13)

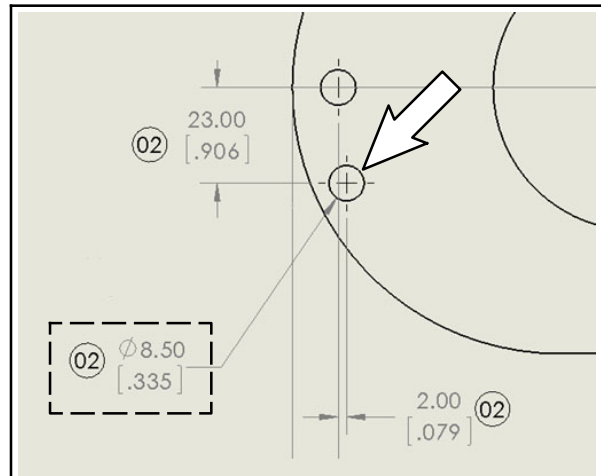
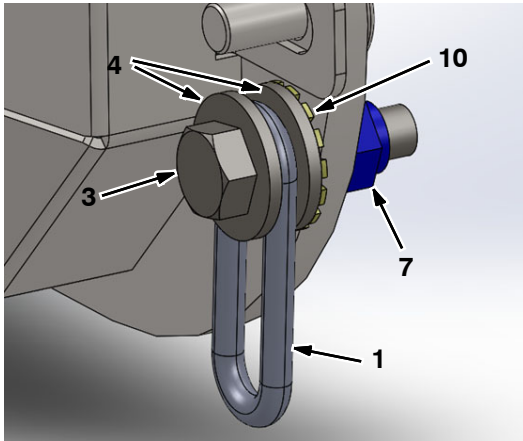


FIG. 13

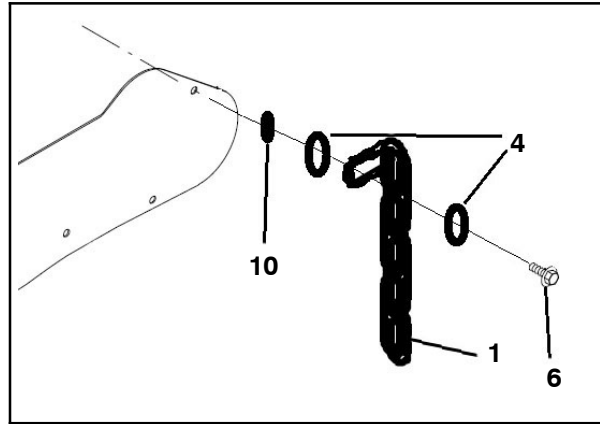


- 15. Machines with direct throw sweep head**  
**only:** Use the M8 hex screw (3), two flat washers (4), and star washer (10) to secure the ground chain (1) to the sweep head. (Fig. 14)



**FIG. 14**

- 16. Machines with dual force sweep head**  
**only:** Use the M8 hex screw (6), two flat washers (4), and star washer (10) to secure the ground chain (1) to the sweep head. (Fig. 15)



**FIG. 15**

- 17.** Reinstall all parts removed to install the static kit onto the sweep head assembly.

**Bill Of Materials For ESD Kit, Update M17 Sweep - 9021118**

Ref.	Tennant Part No.	Description	Qty.
1	43500	Chain, Coil, Str, #2/0, 09.0L 07 Link	1
2	48183	Chain, Coil, Str, #2/0, 14.1L 11 Link	1
3	09011	Screw, Hex, M8 X 1.25 X 30, SS	1
4	01685	Washer, Flat, 0.38B 0.88D .08, SS	2
5	31525	Wire, 10GA 16.0L Blk .25Ring /.38Ring	1
6	09010	Screw, Hex, M8 X 1.25 X 25, SS	1
7	08713	Nut, Hex, Lock, M8 X 1.25, NL, SS	1
8	1074156	Wire, 10GA, 15.0L, Grn, M8 Ring/M8 Ring	1
9	71579	Strap, Static, w/Grommet, .19 1.1W 25.0L	1
10	41141	Washer, Lock, Int- Ext, 0.31	2

TENNANT COMPANY  
P. O. Box 1452  
Minneapolis, MN 55440-1452